



WATER CREATION

TUB FAUCET INSTALLATION GUIDE

BEFORE YOU BEGIN

- 1) Shut off water supply.
- 2) Carefully inspect waste and supply tubing for signs of damage.
- 3) Replace waste or supply tubing if necessary

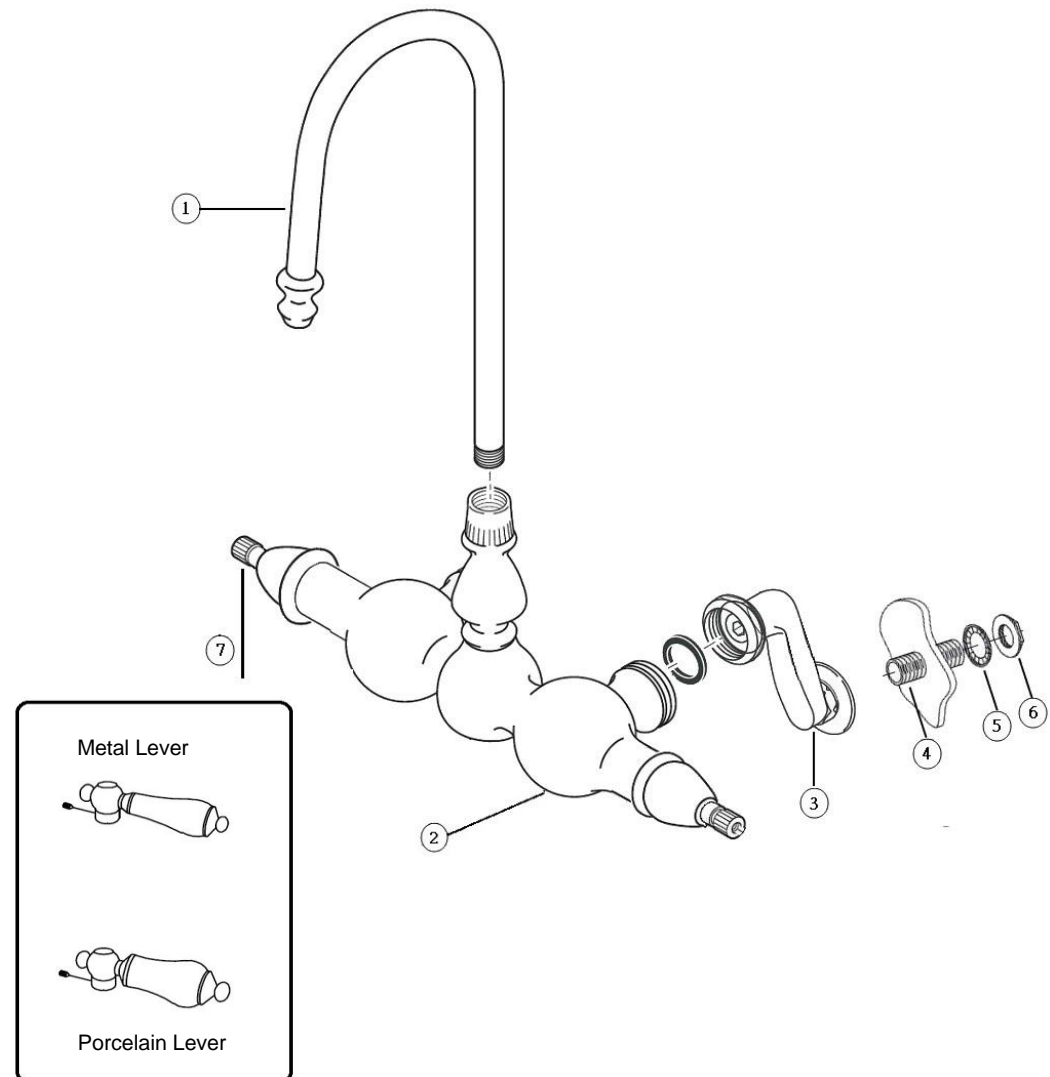
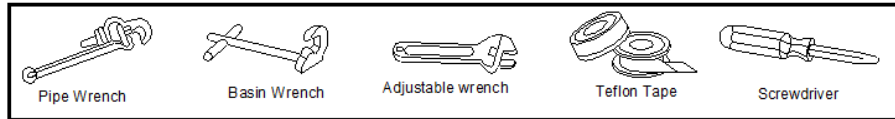
INSTRUCTIONS

- 1) Apply tape or putty to both ends of hot and cold supply nipples (4). Thread the nipples into risers (3).
- 2) Attach the rubber washer into riser nut (3), connect it with faucet body (2).
- 3) Apply tape to the gooseneck spout thread (1) and screw into faucet body.
- 4) Set the faucet onto tub and nipples go through the tub wall holes.
- 5) Slid the metal washer (5) and install the lock nut (6) then tighten with wrench.
- 6) Set the handles (7) on faucet body with screws.
- 7) Connect the water supply lines to riser nipples.
- 8) Turn on main water supply and check all connections for leaking.

COMPLETE INSTALLATION

Note: All nuts connections, hand tighten first then quarter turn tighten by wrench. Don't over tighten the nut.

TOOLS AND MATERIALS



Metal Lever



Porcelain Lever

